

# Procedure to submit Figures to the ALICE Figure Repository

Figures / General Figures / Groups

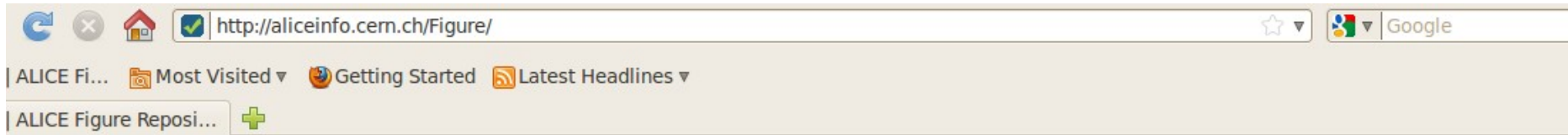


A Large Ion Collider Experiment

European Organisation for Nuclear Research



# ALICE Figure Repository



Login to check the submitted Figures

ALICE HOME PAGES

DURHAM REACTION DATABASE

LOGIN USER

Contents

Figures Policy

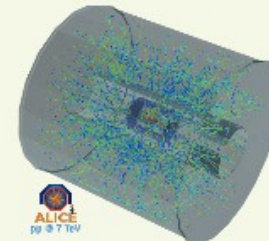
## Welcome

This page contains the ALICE Official figures and plots. To browse the pages, please login first (use your CERN NICE credentials).

Please read the ALICE Figure policy before submit a figure

Additional info:

- Template for figure layout: macro(.C)
- File with the ALICE logo: logo(.png)



Be aware of the Figures Policy before start any submission

ADD NEW FIGURE

Add single figure.

ADD NEW FIGURE GROUP

Add a group of figures. Please organize the groups by topics

All individual figures and groups of figures will be reviewed by the PWG conveners, Physics Coordination and the Editorial Board

Buttons for Submission

ADD NEW GENERAL FIGURE

Add a single general figure.

ADD NEW GENERAL FIGURE GROUP

Add a group of general figures. Please organize the groups by topics

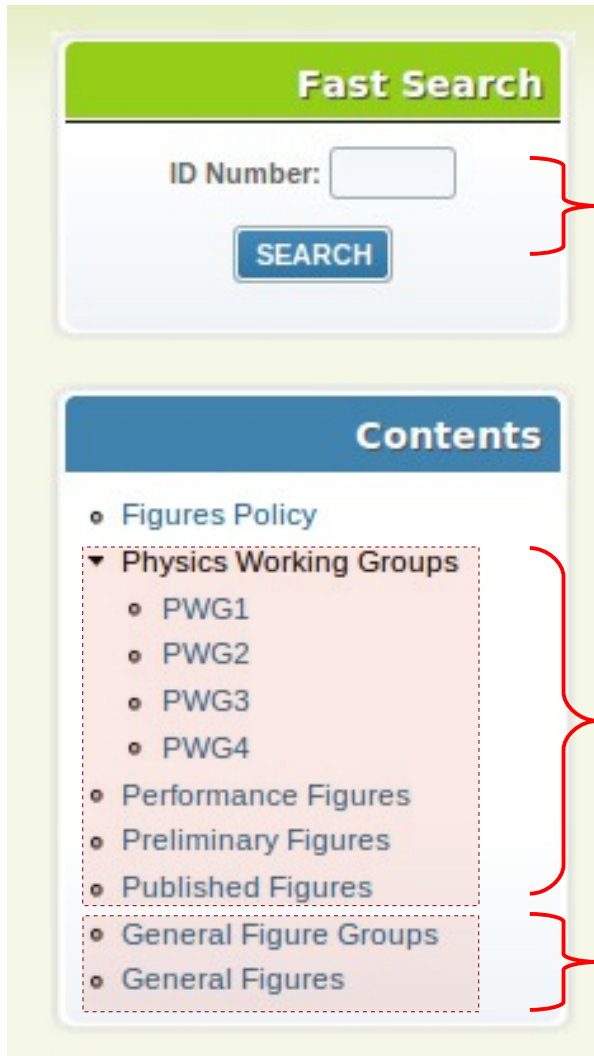
## Calendar Today

- 09:00 TRD Weekly Meeting (Dr. Ken Oyama) CERN (3294-R-008)
- 10:00 PGW1 Calibration Virtual
- 10:00 FoCal LoI Preparation - EVO meeting CERN
- 11:00 PWG3 Paper Preparation (D2H) (Francesco Prino) CERN (160-R-009)
- 14:00 neutral-hadron correlations (Dr. Yaxian Mao) EVO
- 14:00 PWG1 - Run Conditions Meeting (Antonello Di Mauro) CERN (160-R-009)
- 14:00 ALICE-KOREA Meeting (Suh-Urk Chung) CERN (Room C)
- 14:00 AIP-Physics (Dr. Andreas Morsch) CERN (160-1-009)
- 14:30 Geant4 Validation Meeting CERN (160-1-009)
- 15:00 Trigger meeting (Federico Antinori) CERN (160-R-009)
- 15:30 Resonance meeting CERN

alice-webmaster@cern.ch

2

# Content Menu after Login



Quick search for Figure ID

Links for Figures

Links for General Figures

# Kind of Figures

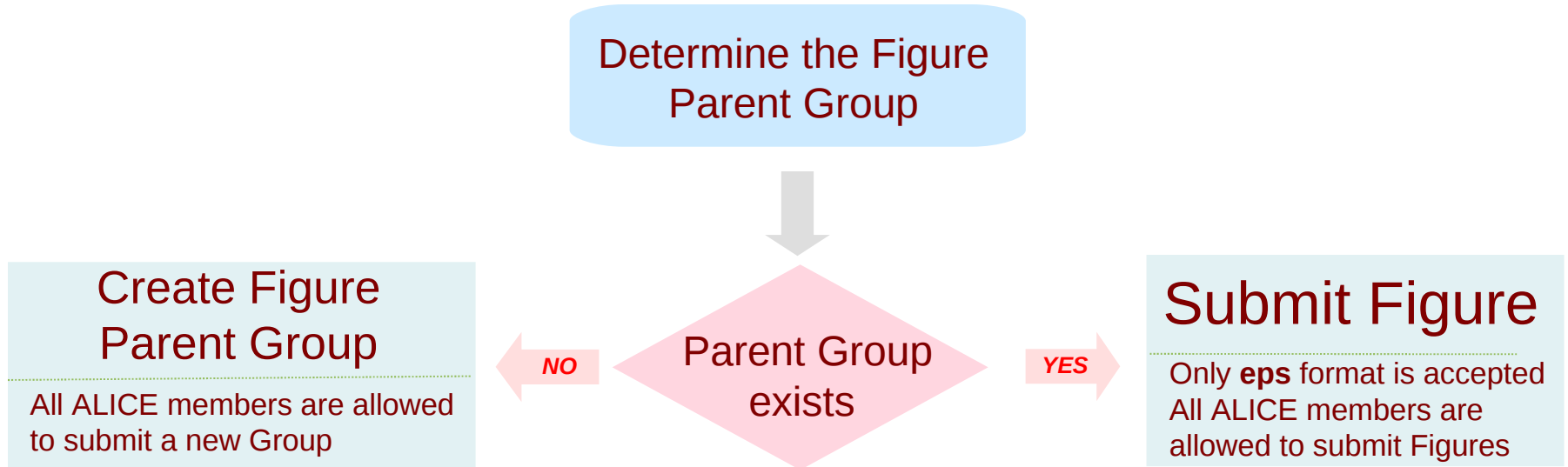
## FIGURES

- ✗ Includes all figures and plots related to detector performance or physics results.
- ✗ Each candidate for an official figure must be discussed within the relevant PWG or Project Group before approval.
- ✗ The figure should be approved by PWG convener(s) or Project Leader(s), then by the Physics Coordinator and finally by the Conference Committee.
- ✗ All ALICE members are allowed to submit figures.

## GENERAL FIGURES

- ✗ Includes figures and pictures to be used in talks, i.e, “event display”, “detector schematics”, etc.
- ✗ Only members of the Conference Committee and Conveners are allowed to submit General Figures.

# General submission flux for Figures



Automatic emails are sent to the **convener** (physics coordinator), CC and the Figure's **author**:

- After the figure submission.
- After the conveners decision.